

GTD GT60

GEOTHERMAL & WATER WELL DRILL RIG



GTD GT60 DRILL RIG

The **GT series** of drill rigs are known for their **high productivity** and **reliability** in geothermal drilling, with **proven performance** in both domestic and commercial applications around the world. These rigs are the **number one choice** for **leading industry professionals**, thanks to their **versatility** and ability to handle a variety of drilling conditions with **precision** and **efficiency**.

DIMENSIONS & WEIGHT

- ▶ Length 41' (12.5 m)
- ▶ Width 8' 2" (2.5 m)
- ▶ Height 10' 3" (3.2 m)
- ▶ Weight 66,000 lbs - 77,000 lbs
(30,000 kg - 35,000 kg)
Actual weight will vary depending on the options selected and installed, e.g. Rods...

DERRICK & FEED SYSTEM

- ▶ 55,000 - 66,000 lbs (25,000 - 30,000 kg) pull-back
- ▶ 26,455 lbs (12,000 kg) push-down
- ▶ 25' (7.62 m) top head stroke

DRILL PIPE & CASING

- ▶ 3 1/2" (88.9 mm) x 25' (7.62 m)
48 rod capacity - 1,200' (365 m)
- ▶ 3 3/4" (95 mm) x 25' (7.62 m)
44 rod capacity - 1,100' (335 m)
- ▶ 4" (101.6 mm) x 25' (7.62 m)
30 rod capacity - 750' (228 m)
- ▶ Max diameter 12 1/2" (320 mm)

ROTARY DRILL HEAD - EURODRILL RH24X

- ▶ EA61V Head motors
- ▶ Swivel with 2" or 3" thru-hole
- ▶ 220 rpm at 3,319 lb-ft (4,5 kNm)
- ▶ 77 rpm at 9,293 lb-ft (12,6 kNm)
- ▶ Floating Spindle (shock absorber)

CRAWLER (TRACK) BASE

- ▶ Doosan Solar 130
- ▶ Steel with rubber pads
- ▶ Wireless remote travel

ENGINE

- ▶ Cummins X12 Tier 4 (stage 5)
- ▶ 513 hp (377 kW)

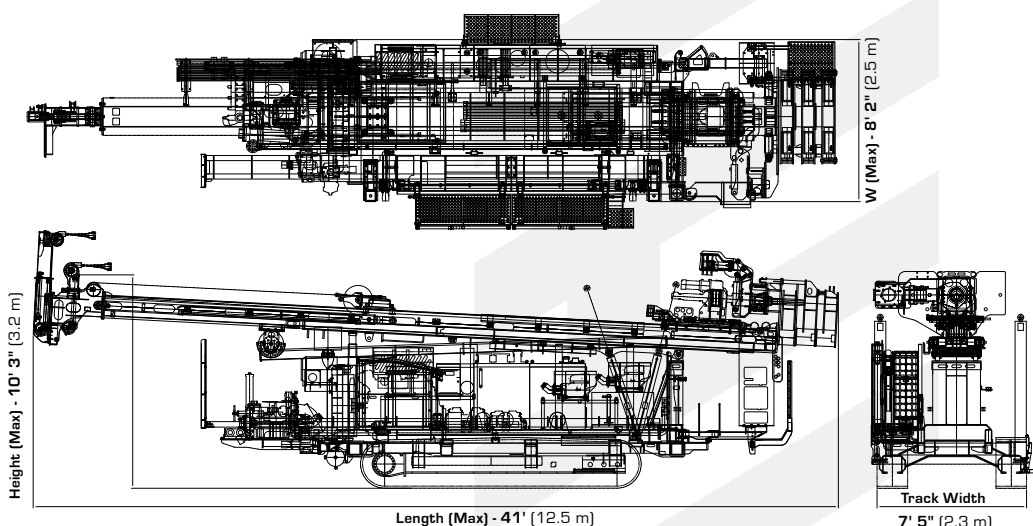
The **GT60** model is designed to reach **depths beyond 2,600 feet (800 meters)** using **mud, air, and hammer** drilling methods. It is equipped with our unique **rod rack and loading system**, which is the most **robust, reliable**, and **safest rod handling system** on the market, ensuring **maximum safety** and **efficiency** in all drilling operations.

GTD STANDARD FEATURES

- ▶ Sideshift - Sliding Drill Head
- ▶ Swivel & Floating Spindle Sub
- ▶ Height Adjustable Working Table
- ▶ Triple Clamps - One rotating
- ▶ Hydraulic Centralizing Rollers
- ▶ Hydraulic Breakout Chain Wrench
- ▶ Auxiliary Hydraulic Ports and Controls
- ▶ Main Winch - 22,000 lbs (10,000 kg)
- ▶ Wire/Sandline Winch
- ▶ Water Injection Mist Pump
- ▶ DTH Lube System
- ▶ Rod Rack & Rod Loader
- ▶ Hydraulic Welder & Generator (7.5 kW)
- ▶ Self Loading Jacks/ Outriggers
- ▶ Air Compressor: 24 cfm (673 lpm), 130 psi (9 bar)
- ▶ Centrifugal Pump: 4x3x13 Single-stage
- ▶ 5x6 Triplex Piston Pump:
317 gpm @ 580 psi (1200 lpm @ 40 bar)
- ▶ Tablet Computer & Engine Diagnostics Software

OPTIONS

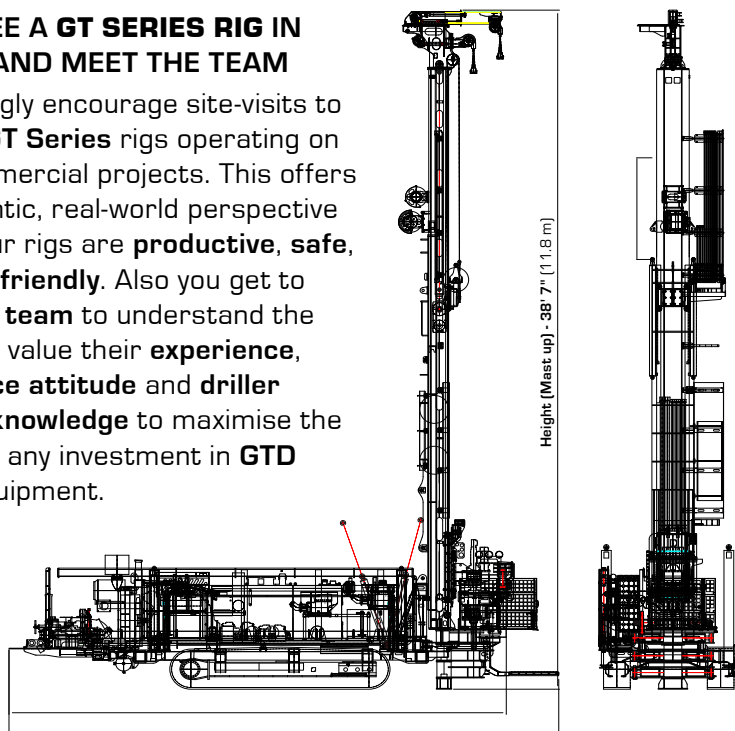
- ☐ Hydraulic Sliding Rod Wrench
- ☐ Angled Drilling
- ☐ Safety Cage



GTD GT60 DRILL RIG

COME SEE A GT SERIES RIG IN ACTION AND MEET THE TEAM

We strongly encourage site-visits to see our **GT Series** rigs operating on 'live' commercial projects. This offers an authentic, real-world perspective on why our rigs are **productive, safe,** and **user-friendly**. Also you get to **meet the team** to understand the additional value their **experience, abundance attitude** and **driller focused knowledge** to maximise the return on any investment in **GTD desco** equipment.



CUSTOMER INSIGHT

PRESIDENT OF PANTERRA ENERGY, SHARES INSIGHTS ON GTD DESCO'S UNIQUE SERVICE

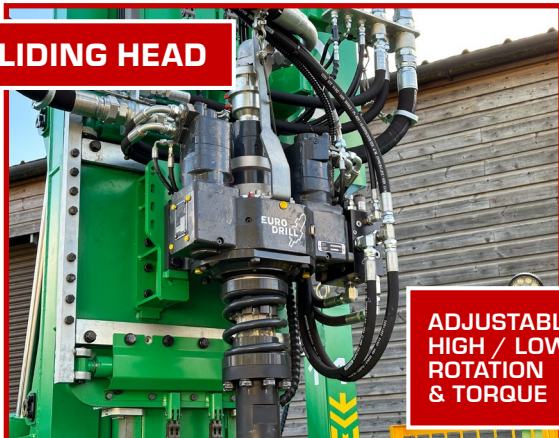
**DON'T BASE YOUR
DECISION ON SPECS
ALONE, COME & SEE
THE RIG IN ACTION...**



**GTD DESCO THE NO.1 CHOICE FOR
GEOTHERMAL INDUSTRY LEADERS**

GTD GT60 DRILL RIG

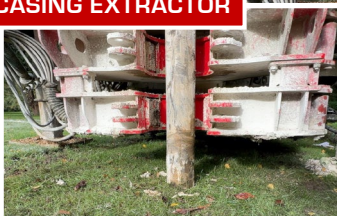
SLIDING HEAD



**HEIGHT ADJUSTABLE
WORKING TABLE**



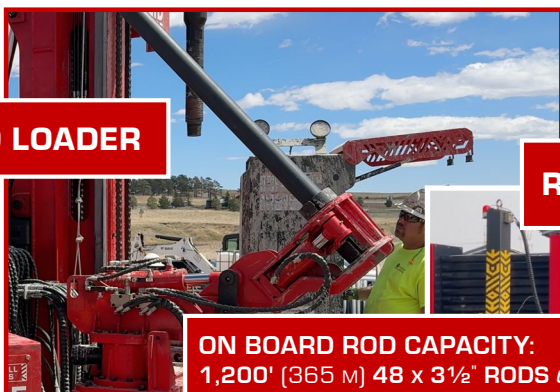
**CAN BE USED AS A
CASING EXTRACTOR**



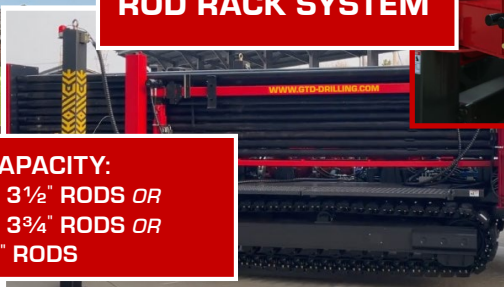
**ADJUSTABLE
HIGH / LOW
ROTATION
& TORQUE**



ROD LOADER



ROD RACK SYSTEM

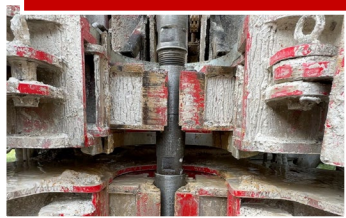


ON BOARD ROD CAPACITY:
1,200' (365 M) 48 x 3 1/2" RODS OR
1,100' (335 M) 44 x 3 3/4" RODS OR
750' (228 M) 30 x 4" RODS

**OPERATED BY THE LEAD
DRILLER, SECOND MAN OR
BOTH ON DUAL CONTROLS**



**TRIPLE CLAMPS
1 ROTATING & 2 FIXED
12 1/2" (320 mm) OPENING**



**HYDRAULIC
CHAIN WRENCH**



**HYDRAULIC
CENTRALIZING
ROLLERS**



**HYDRAULIC SLIDING
ROD WRENCH**



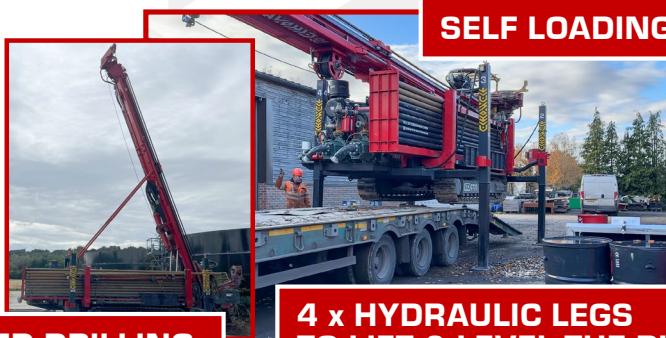
**STEEL TRACKS
WITH RUBBER PADS**



**REMOTE
CONTROL**



SELF LOADING

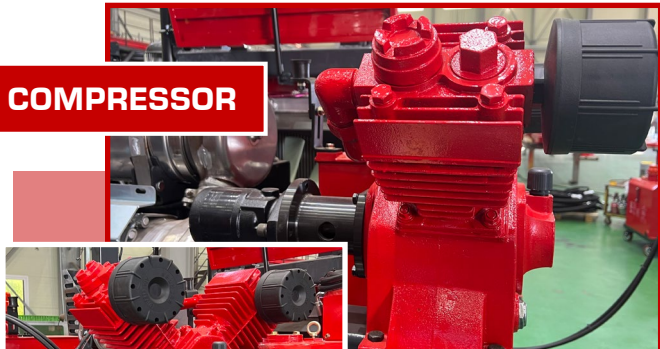


ANGLED DRILLING

**4 x HYDRAULIC LEGS
TO LIFT & LEVEL THE RIG**

GTD GT60 DRILL RIG

COMPRESSOR



USEFUL FOR PNEUMATIC TOOLS,
PRIMING CENTRIFUGAL PUMPS,
CLEARING HOSES/PUMPS, ETC.
(PREVENTS COLD WEATHER OVER NIGHT FREEZING)

**ROTATING 90°
AND EXTENDS**



**INDEPENDENT
MAIN WINCH &
WIRE/SANDLINE
WINCH**

AUXILIARY HYDRAULICS

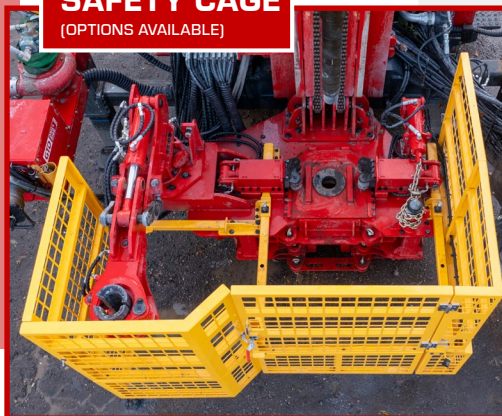


USEFUL FOR POWERING
SAND GUZZLERS, GROUTERS,
LOOP REELERS ETC.

**WELDER &
GENERATOR**



SAFETY CAGE
(OPTIONS AVAILABLE)



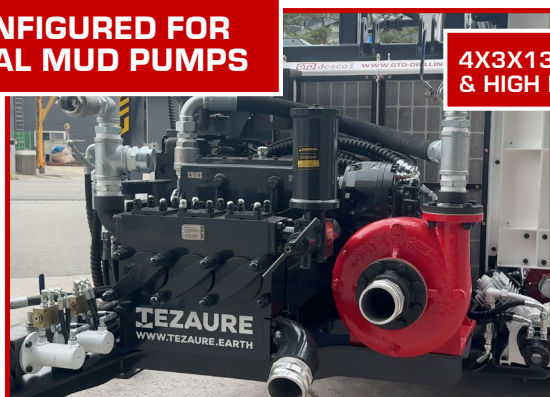
**TABLET COMPUTER & ENGINE
DIAGNOSTICS SOFTWARE**



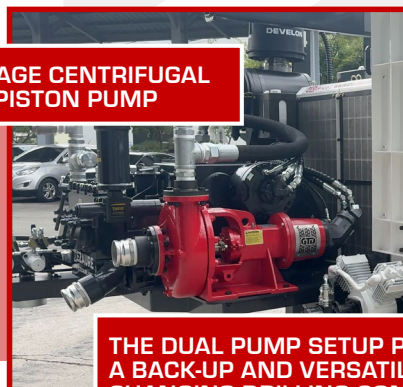
**TRIPLEX MIST PUMP
FOR AIR DRILLING**



**CONFIGURED FOR
DUAL MUD PUMPS**



**4X3X13 SINGLE-STAGE CENTRIFUGAL
& HIGH PRESSURE PISTON PUMP**



THE DUAL PUMP SETUP PROVIDES
A BACK-UP AND VERSATILITY IN
CHANGING DRILLING CONDITIONS